

CROUZET TOUCH QUICK START



SUMMARY

- Hardware and software required
- Crouzet Touch software installation
- Connecting the hardware for program transfer
- How to open a Crouzet Touch program
- Program transfer
- Connecting the hardware for use
- Program example

HARDWARE AND SOFTWARE REQUIRED

Hardware



CT104 or CT107



CTP104-E, CTP107-E or CTP110-E



em4



USB Interface
88 980 110



Modbus RS485
Interface
88 980 120

Cables

Programming



MicroUSB
25526005



Ethernet cable
88 970 508



USB cable
88 980 170

Communication



Ethernet cable
88 970 508



Modbus cable
88 980 171
88 980 172

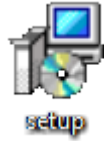
Software

Crouzet Touch Soft
Version $\geq 5.05.02.057$

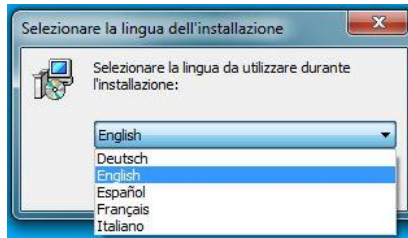
em4 Soft
Version $\geq 1.2.07$

CROUZET TOUCH SOFTWARE INSTALLATION

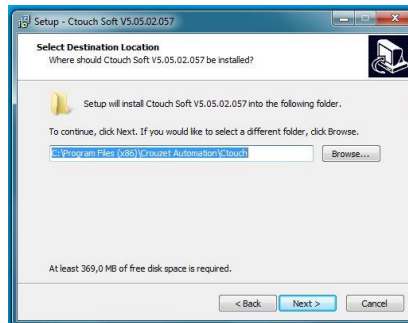
Installing Crouzet Touch software



Double click on setup.exe to launch software installation



Select the installation language, this will also set the Crouzet Touch soft language

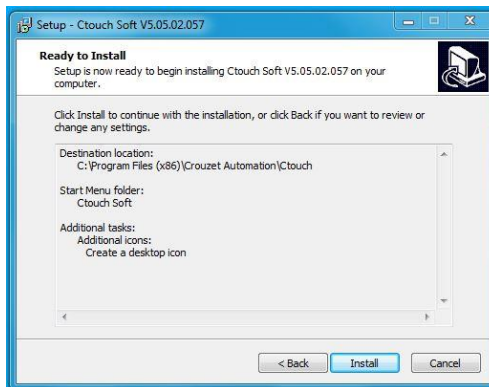


Select the destination path and folder for Crouzet Touch software

Installing Crouzet Touch software

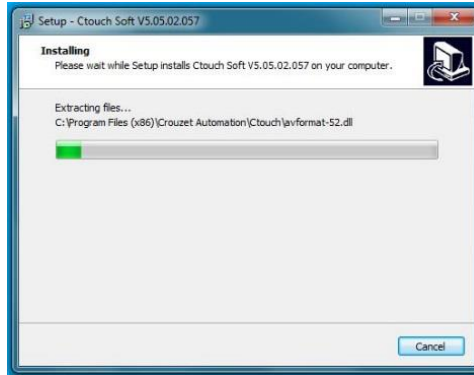


Select - *Create a desktop icon*

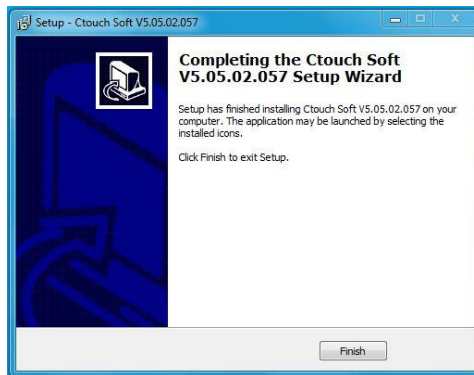


Click on *Install* to start installation

Installing Crouzet Touch software



Files will be copied to the selected folder



At the end of the installation process click on *Finish*

CONNECTING THE HARDWARE FOR PROGRAM TRANSFER

- Program can be transferred to the Crouzet Touch using a USB-microUSB cable (Crouzet Touch Essential) or an ethernet cable (Crouzet Touch Performance).
- Program transfer with USB does not require any further settings as the USB driver is installed during the Crouzet Touch soft installation.
- Program transfer with ethernet requires the configuration of the IP addresses of the PC and Crouzet Touch. The following pages show how to set the IP addresses of both devices for Windows 7.

- Setting the IP addresses of the Crouzet Touch and PC

In order to allow the Crouzet Touch and a PC to communicate, they have to be in the same local network. Certain IP address ranges are reserved for local networks.

In our example we will use:

IP address Crouzet Touch - 192.168.100.1

IP address PC - 192.168. 100.10

Subnet mask - 255.255.255. 0

Gateway - 192.168. 100 . 0

Subnet mask and Gateway have to be the same in the Crouzet Touch and the PC !

Setting the IP address on Crouzet Touch

- Setting the IP address of the Crouzet Touch for CTP104-E and CTP107-E*



Click on the tool icon on the home page of the CTP104-E or CTP107-E

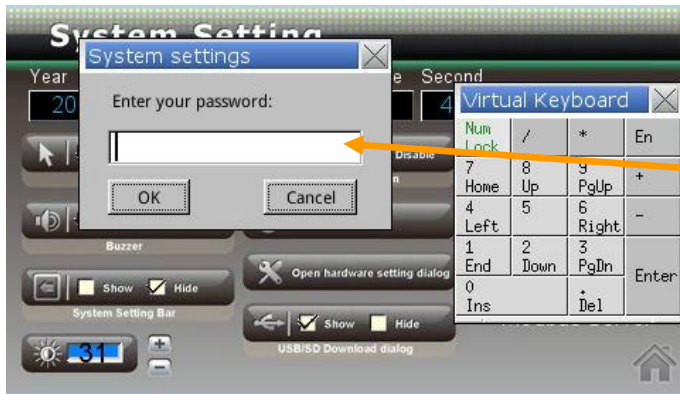


Click on *Open hardware setting dialog* button

*CTP110-E on LAN 2 is already set to IP 192.168.100.1 by default,

Setting the IP address on Crouzet Touch

- Setting the IP address of the Crouzet Touch for CTP104-E and CTP107-E*



Enter default password 111111 using the virtual keyboard on the Crouzet Touch and press the OK button



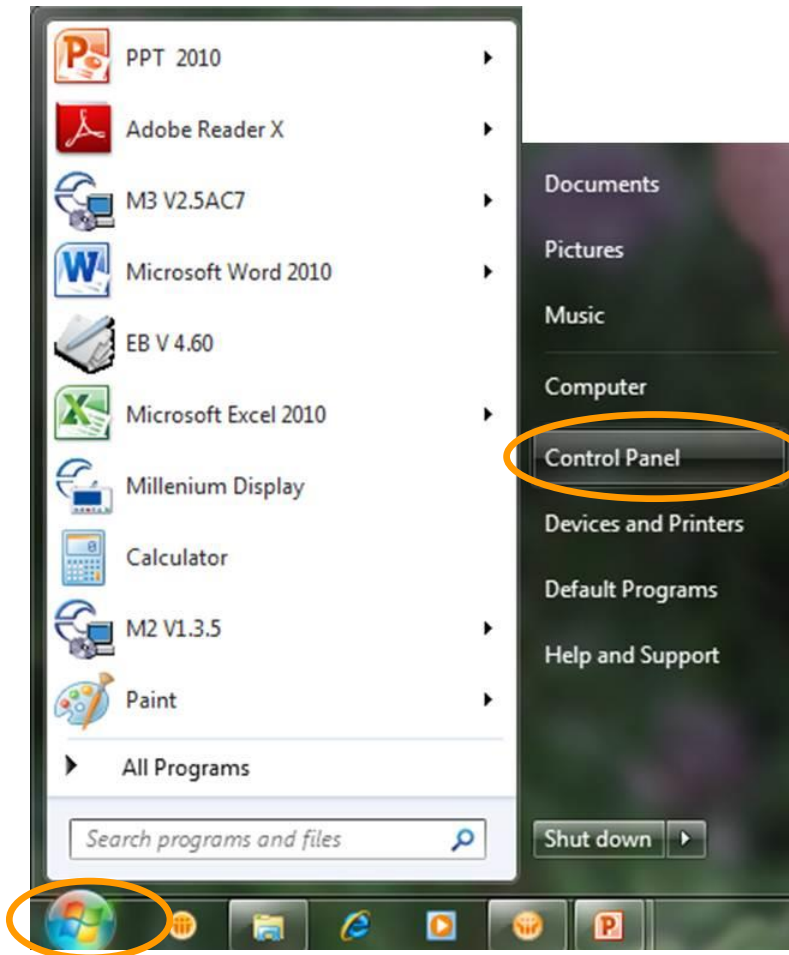
Select the *Network* tab, select the option *IP address get from below*, then enter the IP, subnet mask and gateway as in the picture.

Click on *Apply* button and *OK*

*CTP110-E on LAN 2 is already set to IP 192.168.100.1 by default,

Setting the IP address on PC

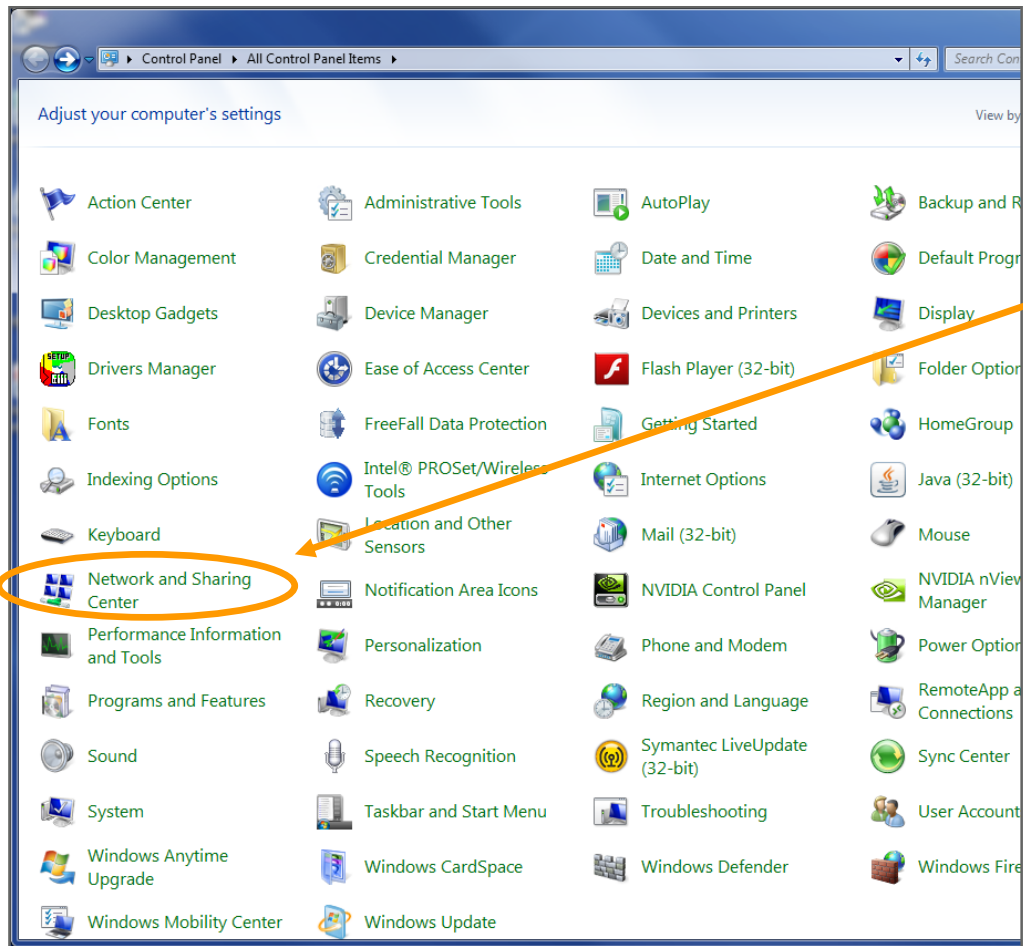
- Setting the IP address on a PC under Windows 7



Click start, then Control Panel

Setting the IP address on PC

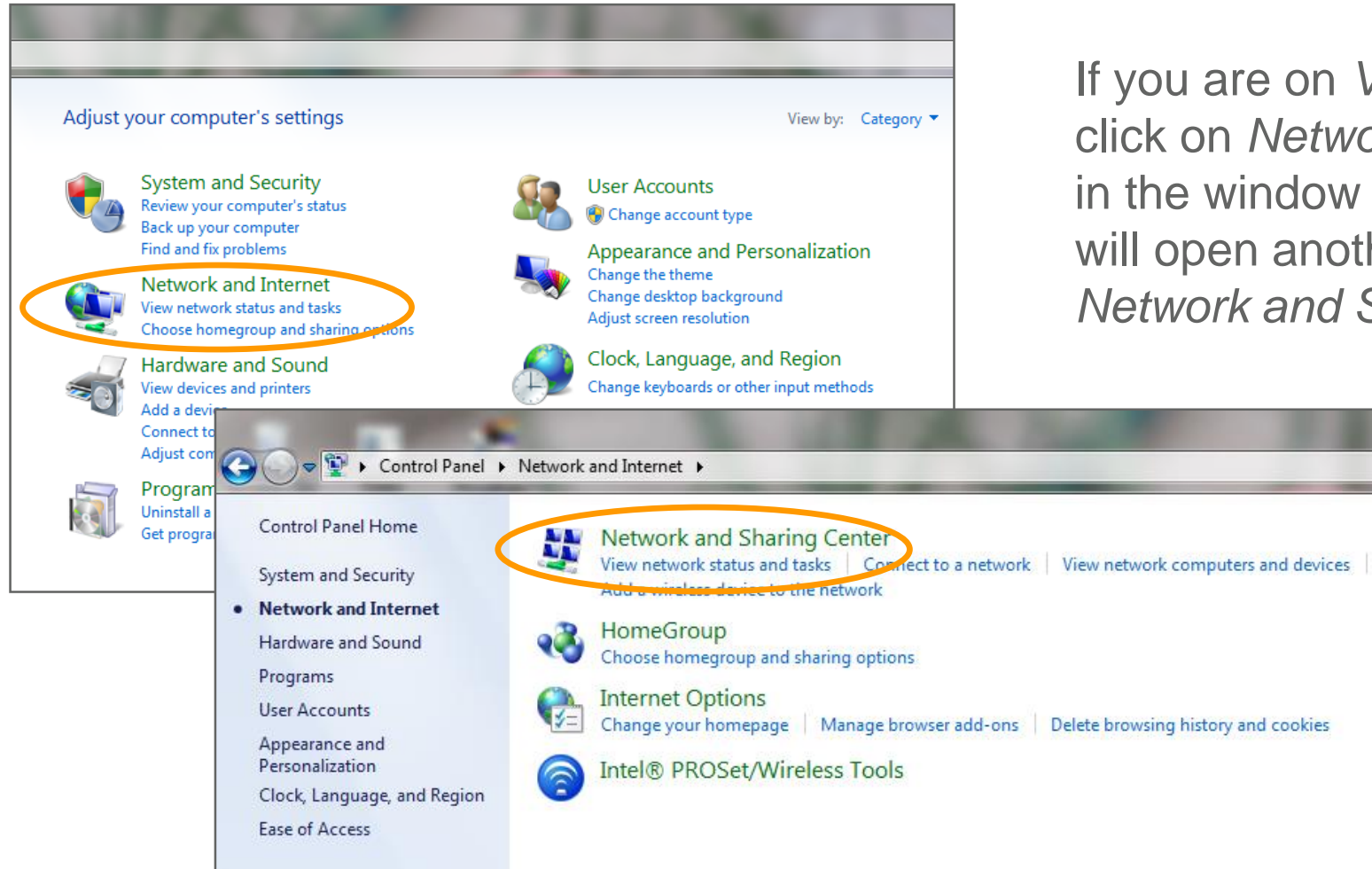
- Setting the IP address on a PC under Windows 7



If you are on *View Icons* click on *Network and Sharing Center* in the window that opens

Setting the IP address on PC

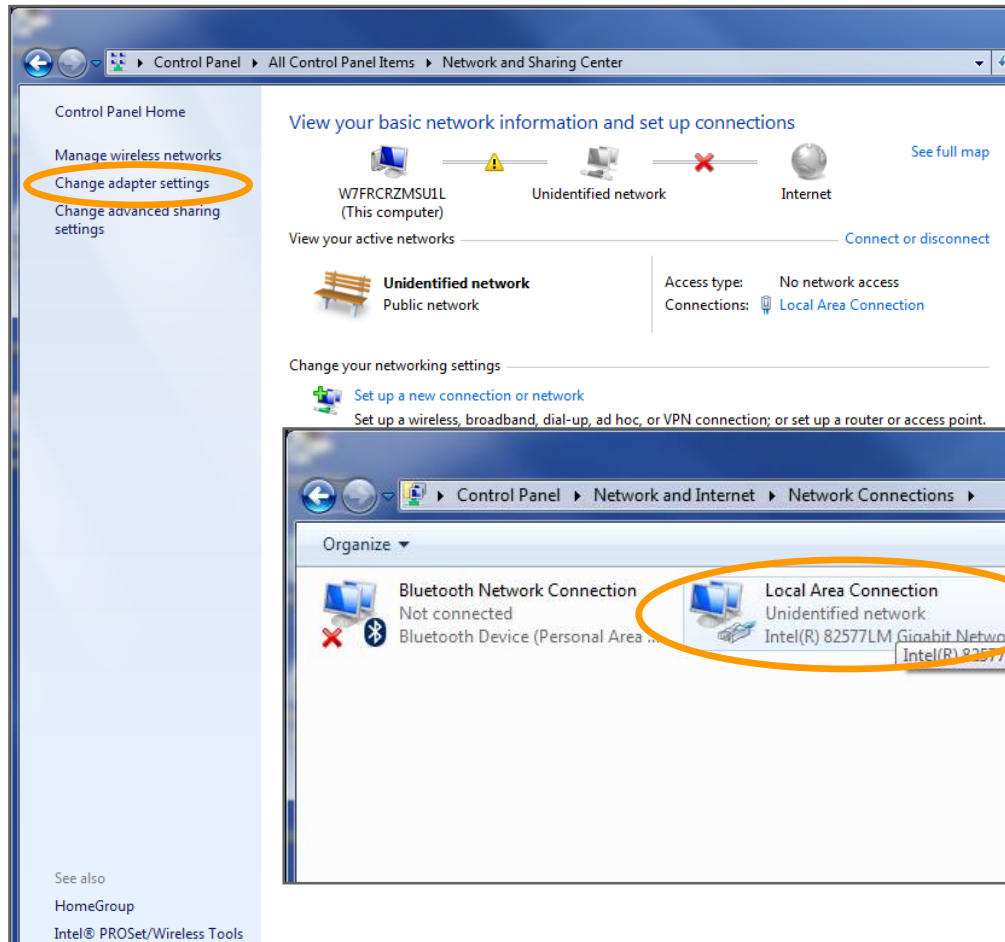
- Setting the IP address on a PC under Windows 7



If you are on *View Category* click on *Network and Internet* in the window that opens, this will open another window with *Network and Sharing Center*

Setting the IP address on PC

- Setting the IP address on a PC under Windows 7

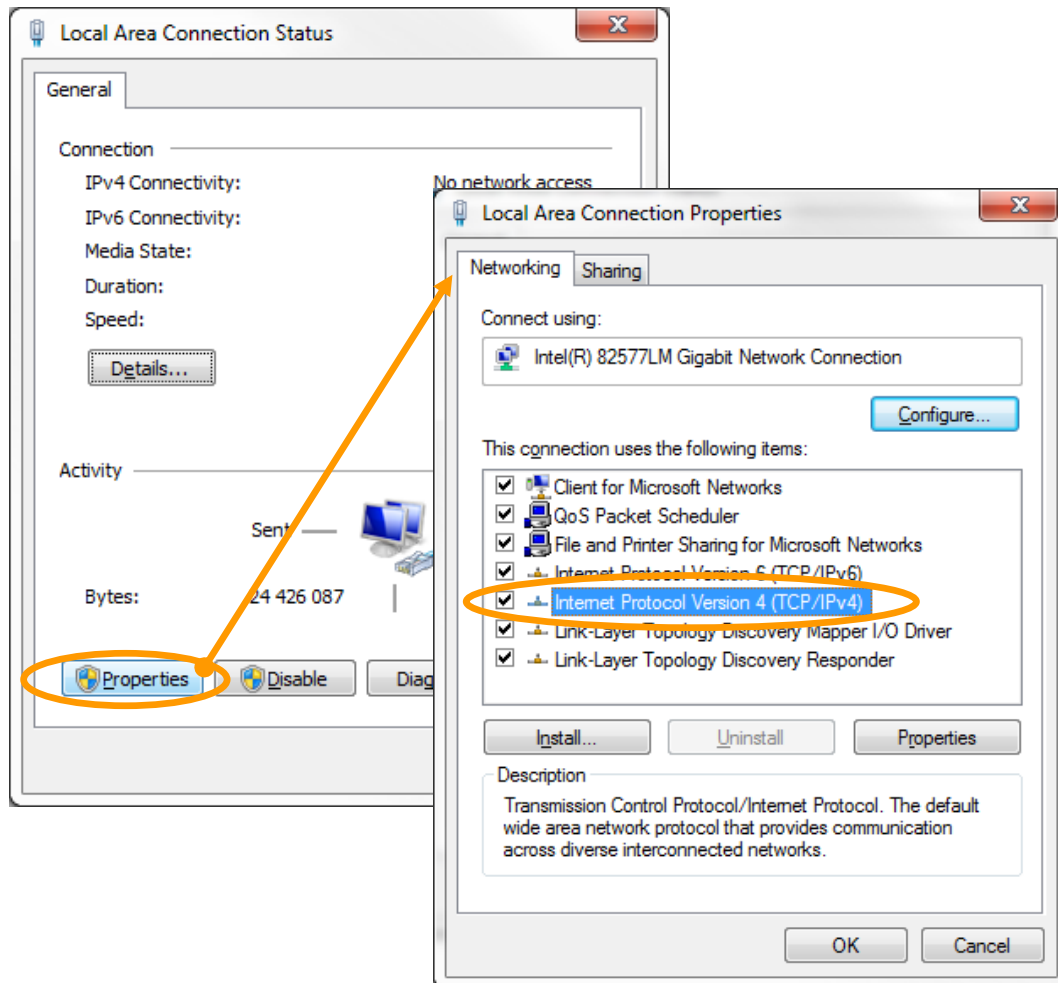


In *Network and sharing center* click on *Change adapter settings*

In the next window click on *Local Area Connection*

Setting the IP address on PC

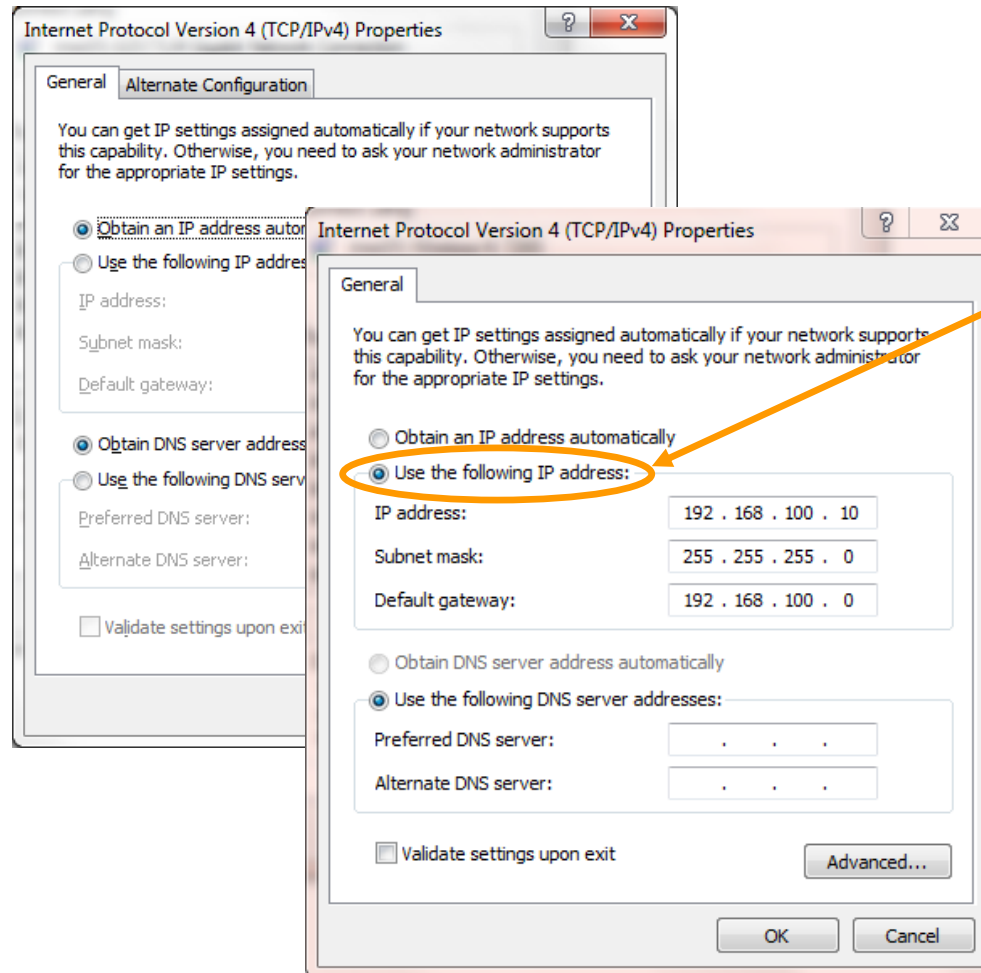
- Setting the IP address on a PC under Windows 7



Click on *Properties*, then double click on *Internet Protocol Version 4*

Setting the IP address on PC

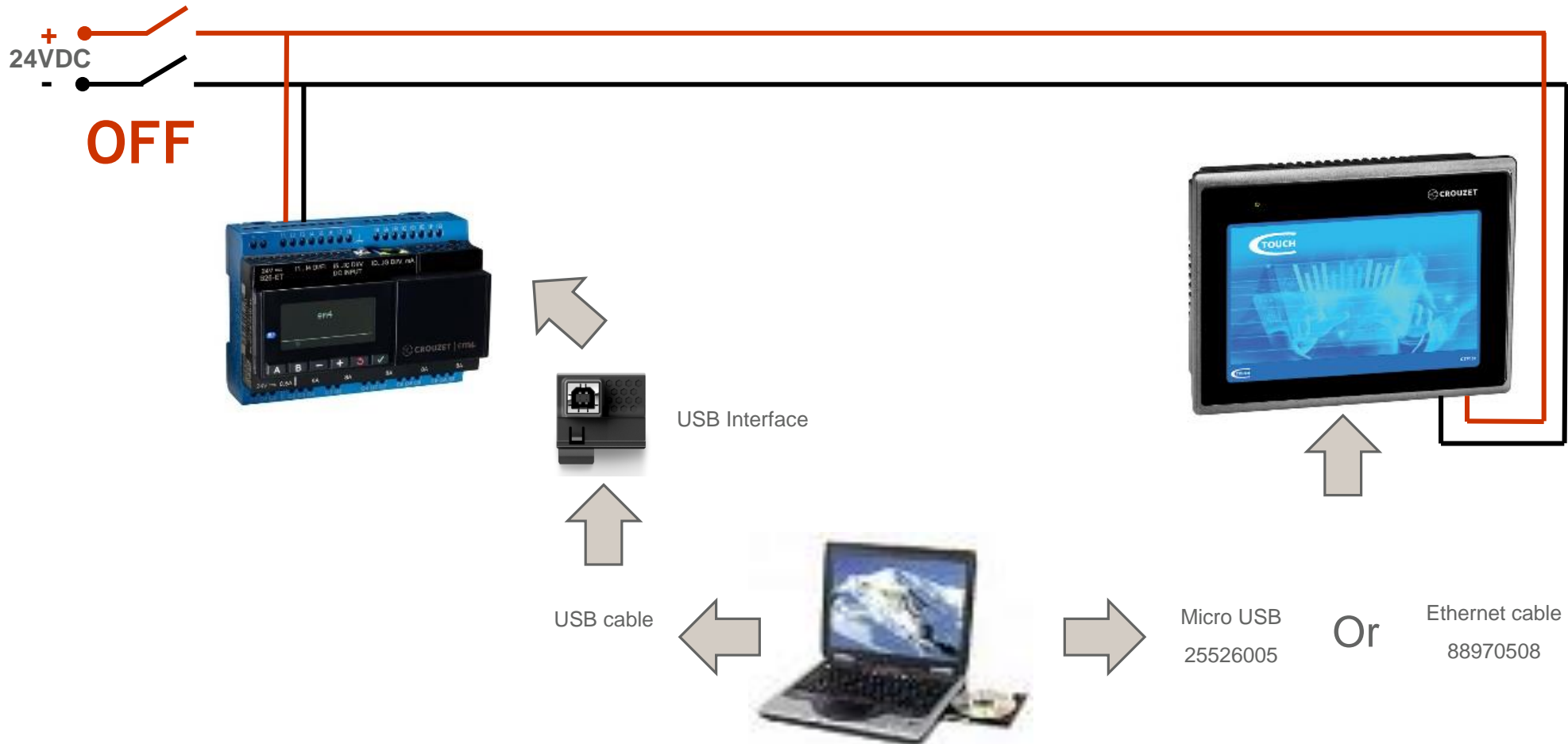
- Setting the IP address on a PC under Windows 7



Tick Use the following IP address then enter the *IP address*, *Subnet mask* and *Default gateway* as shown

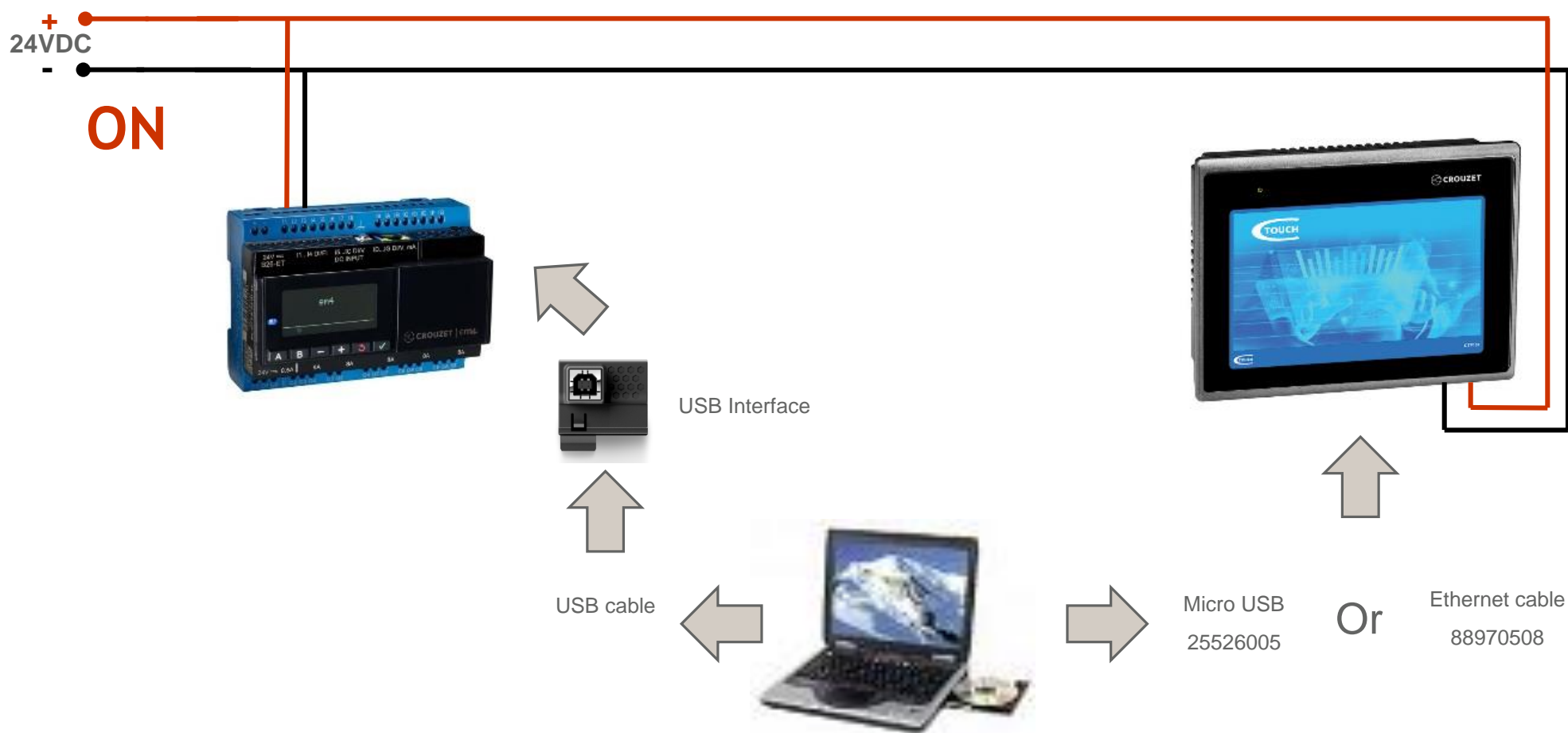
Wiring for USB and Ethernet program transfer

- Wiring for program transfer



Wiring for USB and Ethernet program transfer

- Program transfer



HOW TO OPEN A CTOUCH PROGRAM

How to open a Crouzet Touch program

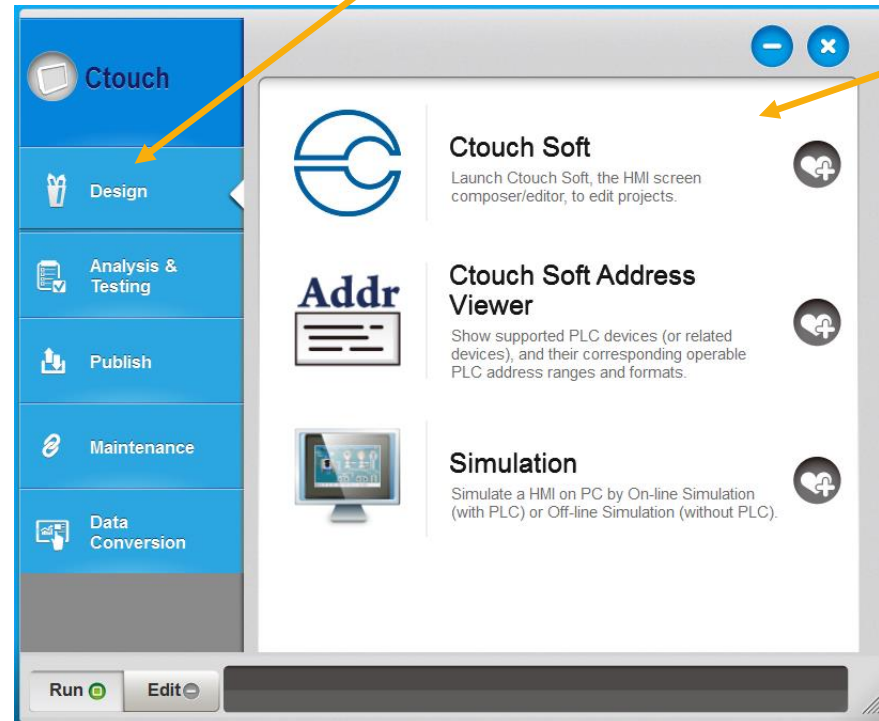
- Touchscreen programs have an *.empt*, *.exob* or *.ecmp* extension:
 - *.ecmp* files are compressed files which include libraries used in the project
 - *.exob* files are compiled files
 - *.empt* files are project files

In order to open *.exob* and *.cmp* files they need to be treated first

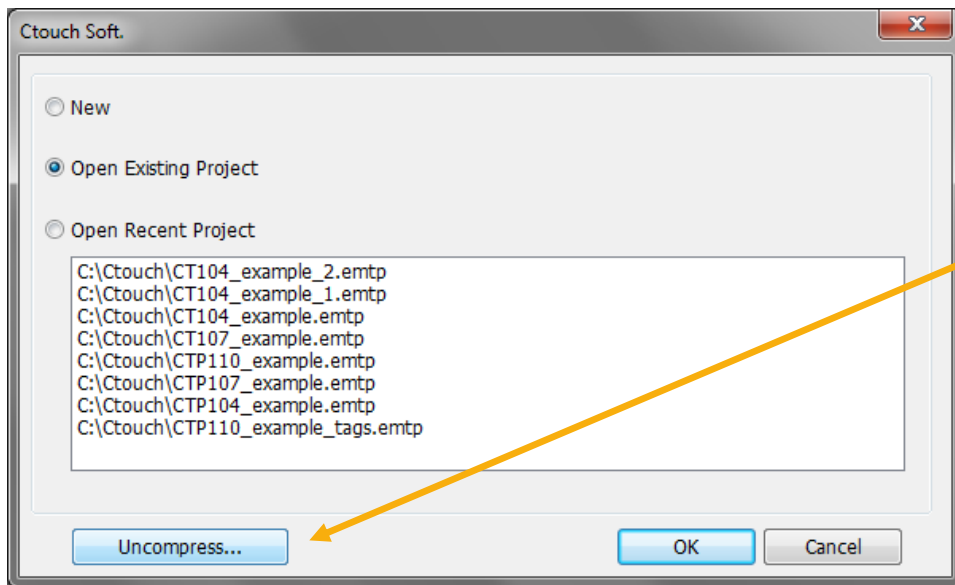
Some example programs for em4 and Crouzet Touch are provided together with this Quick Start guide. Complete list is available at the end of the document in *Program Example* chapter

How to open a Crouzet Touch program

- Launch Utility Manager, double click on the Utility Manager on your desktop
- From the Utility Manager window select the Design tab on the left and then click Crouzet Touch Soft

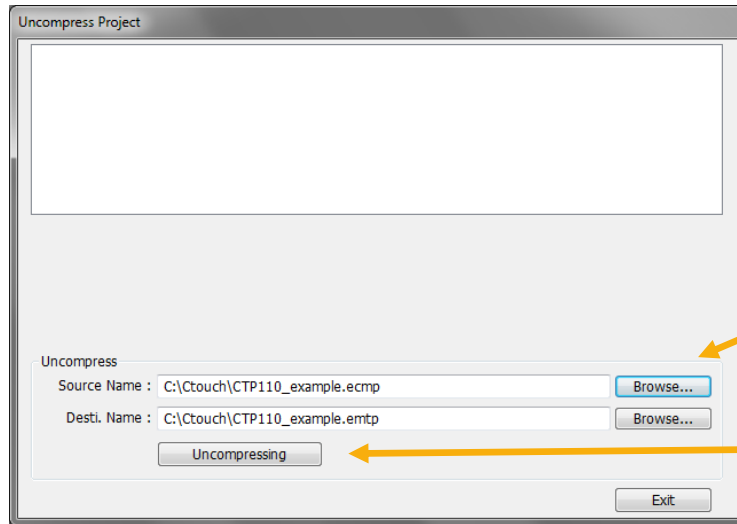


How to open a Crouzet Touch program



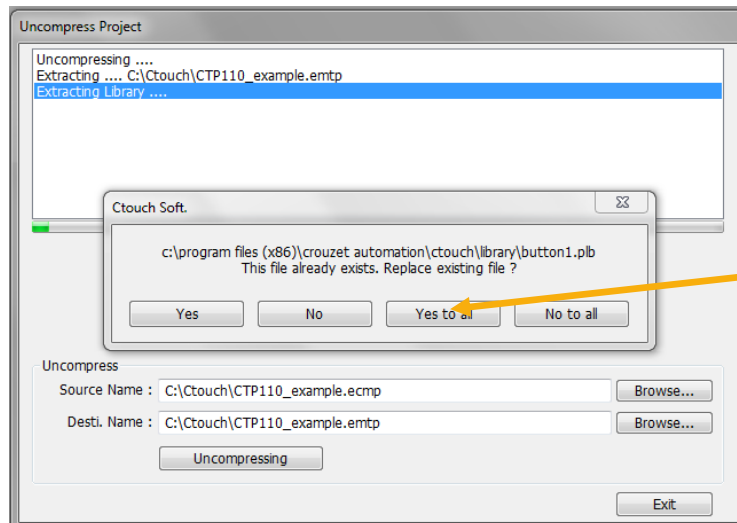
Examples provided with quickstart are compressed .ecmp files, click on *Uncompress*

How to open a Crouzet Touch program



Browse to the .ecmp files in Source Name and define where it has to be saved in Desti.Name then click Uncompressing.

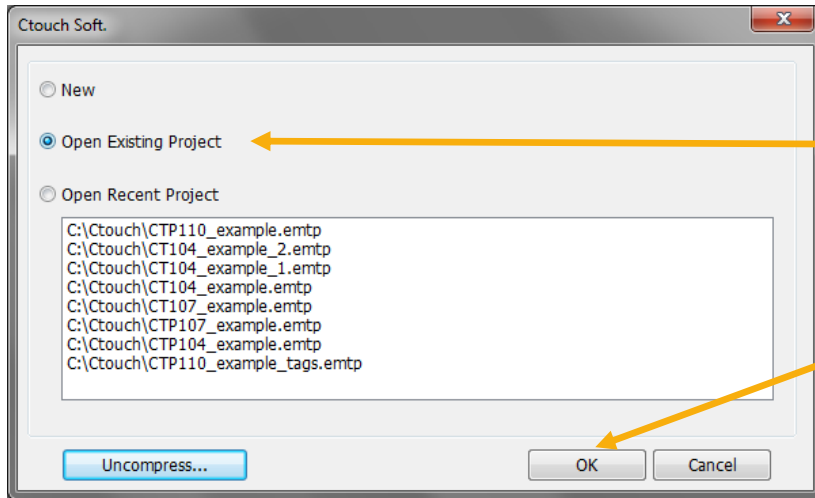
The program will create a project file in the destination folder and add all the libraries found in the compressed file.



Some libraries maybe duplicated, program will ask you if you want to replace them, click on *Yes to all*.

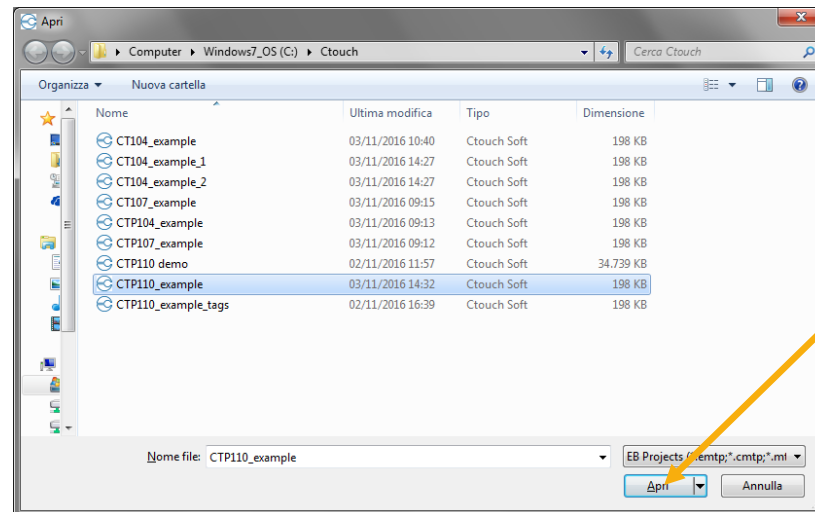
When the process is complete click on *Exit*

How to open a Crouzet Touch program



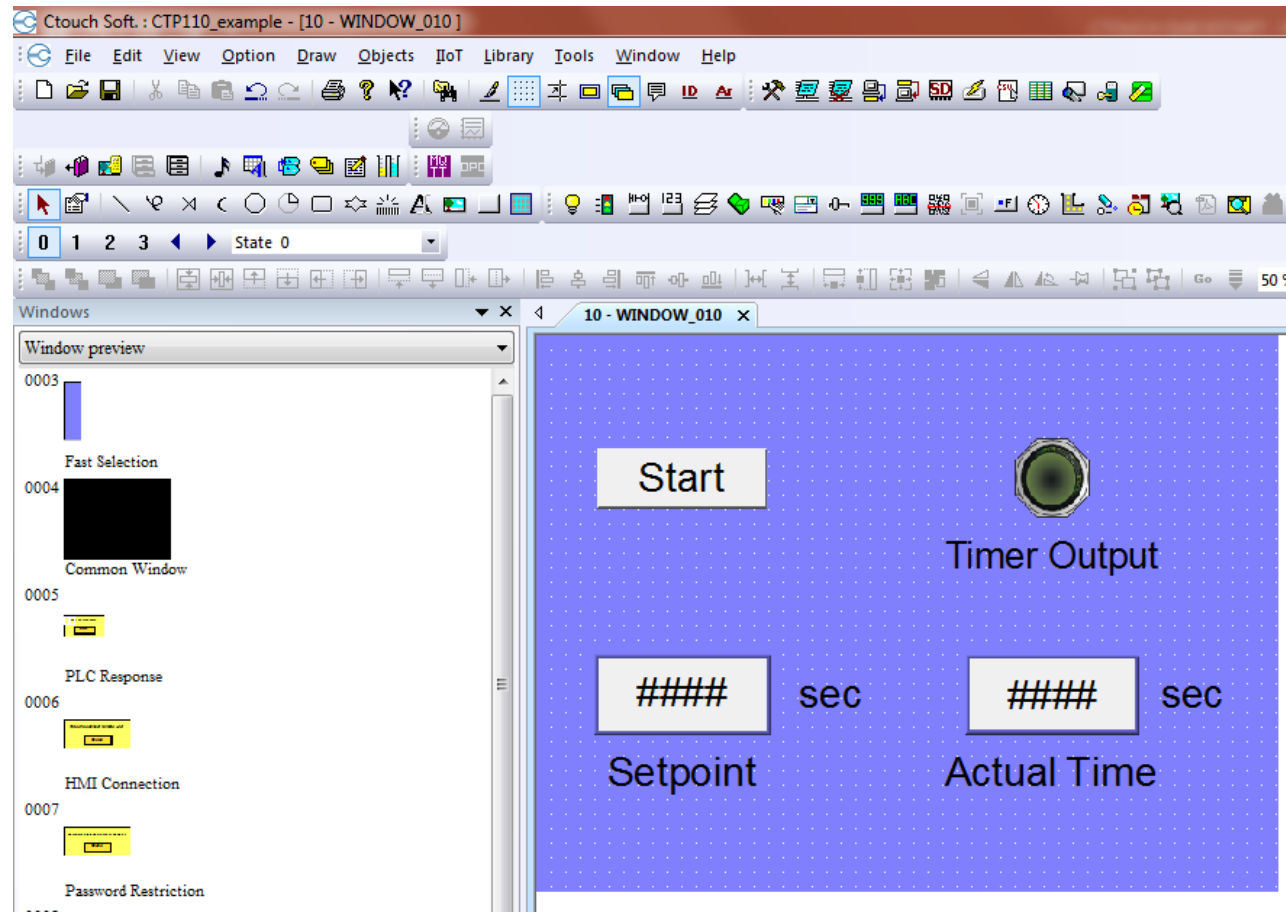
Select *Open Existing Project*
click on *OK* and browse to
the file you have just
uncompressed

Then click *Open*

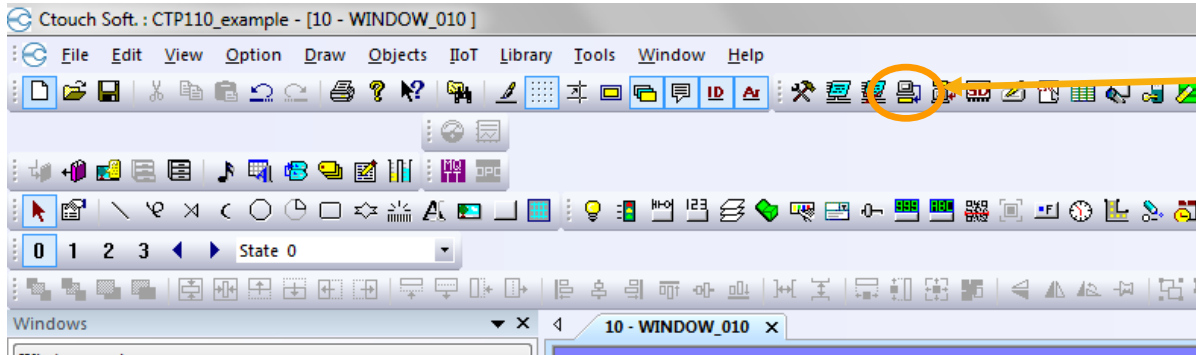


How to open a Crouzet Touch program

- Once the program has been loaded in Crouzet Touch soft you should see the following:



How to open a Crouzet Touch program

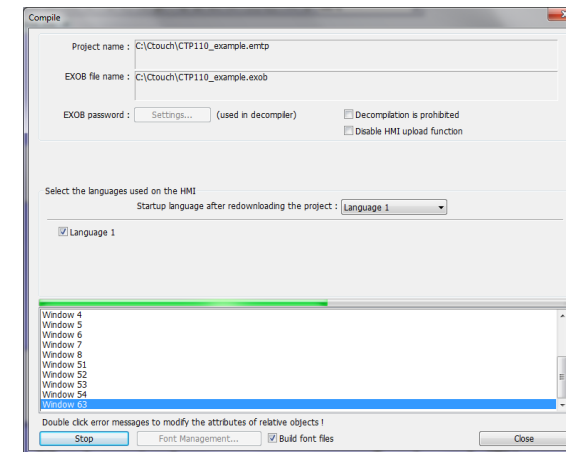
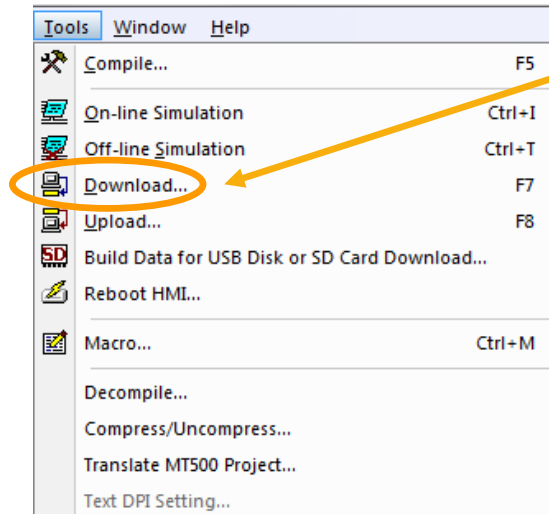


Click on the icon *Download*

Or

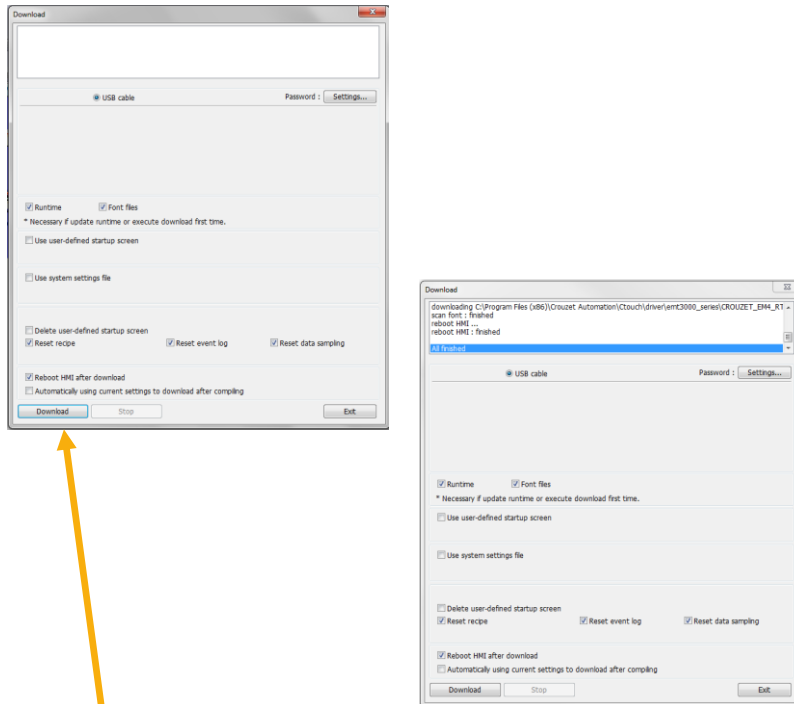
Open *Tools* and select *Downloads*

Before downloading, project is compiled and checked for errors



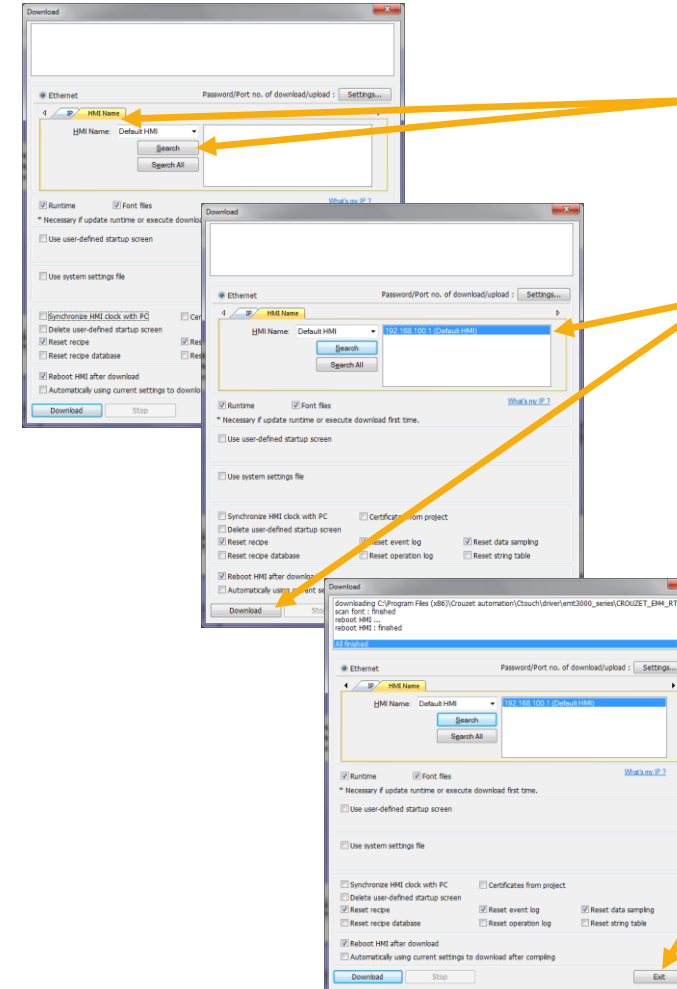
How to open a Crouzet Touch program

Download by USB



Click on *Download* button,
at the end of the download click on *Exit*

Download by Ethernet



Click on *HMI name* tab
and *Search* button to
detect the touch
connected to your PC

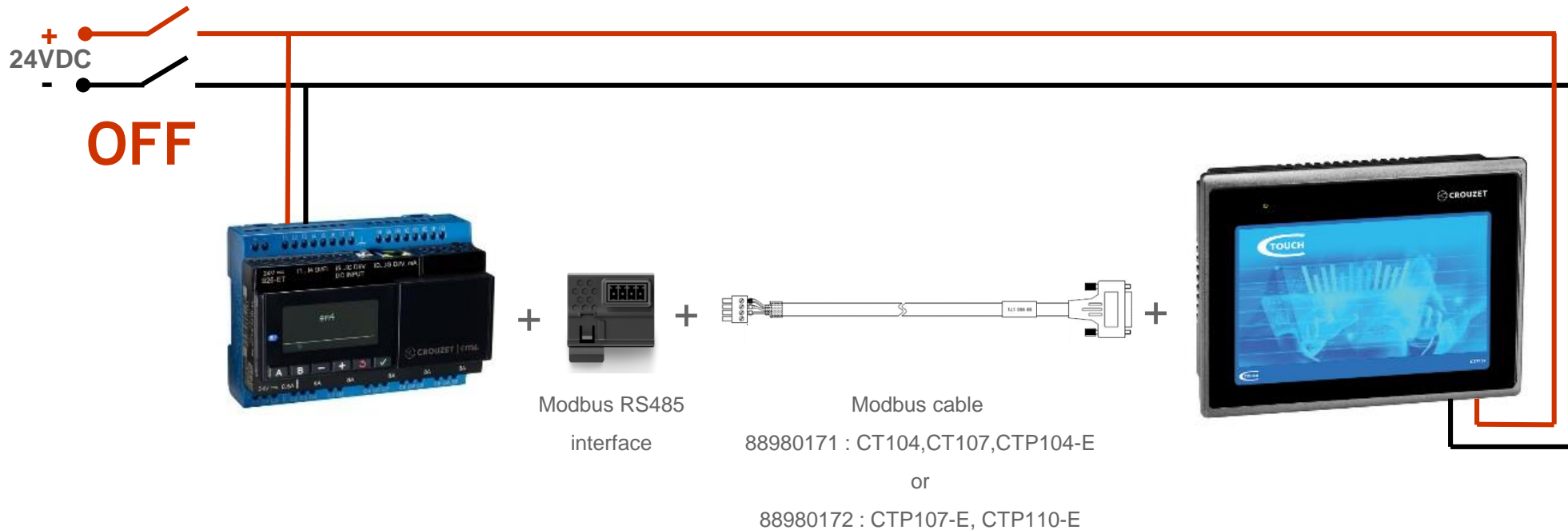
Select the detected
device (IP 192.168.100.1)
and click on *Download*
button

At the end of the
download click on *Exit*
button

CONNECTING HARDWARE FOR USE

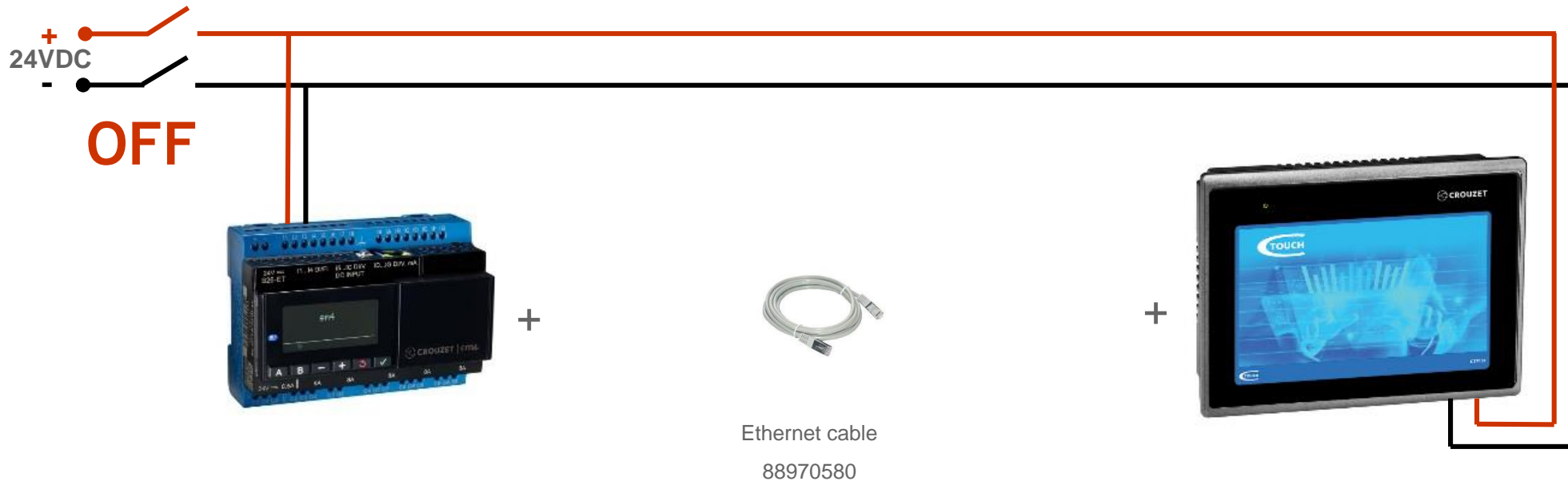
Connecting hardware for use

- Wiring for em4 local, alert and remote using modbus interface



Disconnect power and insert the modbus interface in the em4, connect the modbus cable between the em4 and the Crouzet Touch then switch on power. Data exchange between the two devices will start

- Wiring for em4 ethernet using ethernet cable

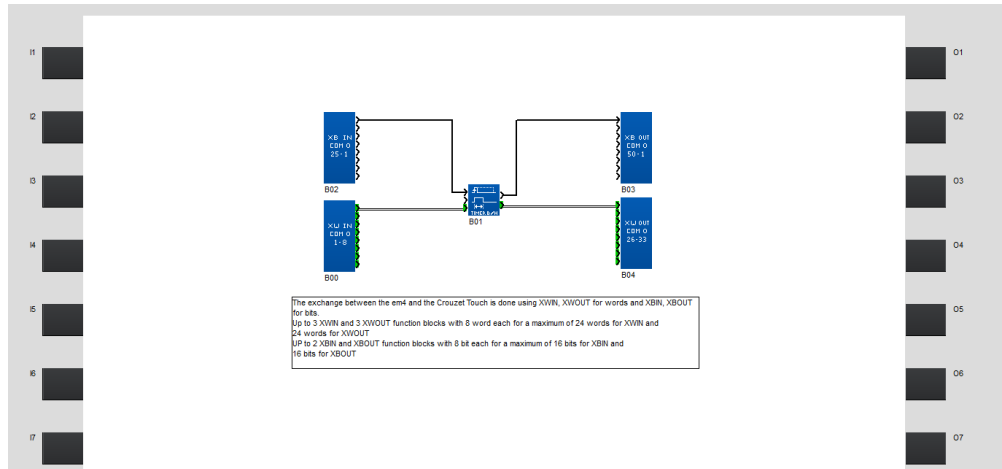


Disconnect power connect ethernet cable between the em4 and the Crouzet Touch then switch on power. Data exchange between the two devices will start

PROGRAM EXAMPLE

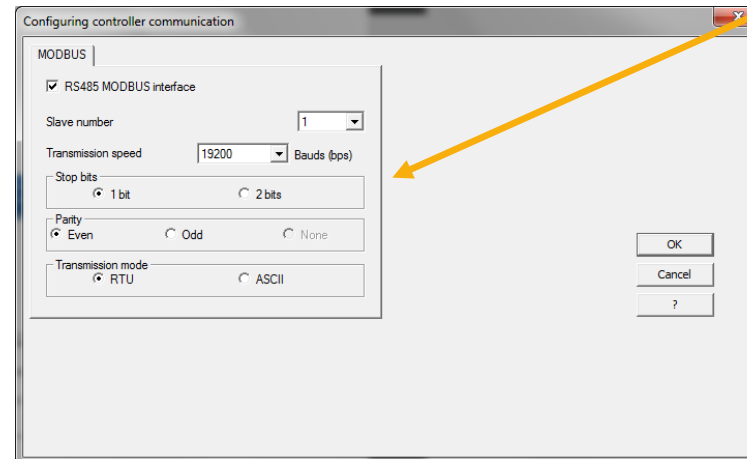
- Sample programs for different type of Crouzet Touch and em4 are available together with this Quickstart guide
 - em4 programs:
 - em4local_example.pm4
 - em4alert3G_example.pm4
 - em4remote_example.pm4
 - em4ethernet_example.pm4
 - Crouzet Touch programs (compressed file):
 - CT104_example.ecmp
 - CT107_example.ecmp
 - CTP104_example.ecmp
 - CTP107_example.ecmp
 - CTP110_example.ecmp

- em4 program example



Program description: timer is started by a bit written by the Crouzet Touch on XBIN and time duration is set by the Crouzet Touch with XWIN. The Crouzet Touch is also reading the timer output from XBOU and the current time from XWOUT.

Modbus settings (speed, parity, stop bits) are the same used on the Crouzet Touch.



THANK YOU FOR YOUR ATTENTION

WWW.CROUZET-AUTOMATION.COM